

THE IRRESISTIBLE FLAMES OF MASPORT



GAS LOG FIRE FLUE MANUAL 2004

552339

ISSUE B, JULY 2005



NEW ZEALAND

1-37 Mt Wellington Highway, Panmure, Auckland 6
Ph. (09) 571 1200 fax 0508 570 570
email sales@masport.co.nz
www.masport.co.nz

Masport[®]
gas & wood fires

CONTENTS

Ordering Information	Page 3
----------------------------	--------

Freestanding Flue Kits (Standard)

Geneva (Ultimate)	Page 4
Cardrona (Baltimore) & Monaco	Page 6
Offset & Extension Kits For Freestanding Fires	Page 8-9

Inbuilt Flue Kits (Standard & Zero Clearance)

Masonry Chimney Flue Kit for Piccolo, Sofia & Madrid	Page 10
Zero Clearance Flue Kit for Piccola, Sofia & Madrid	Page 12
Zero Clearance Flue Kit for G51 Surefire	Page 14
Extension & Parts List for Masonry Chimney Installations	Page 16
Extension & Offset Kits for Zero Clearance Installations	Page 17

Direct Vent Freestanding Flue Kits

Geneva (Ultimate) Top Exit Vertical	Page 18
Geneva (Ultimate) Top Exit Horizontal	Page 20
Geneva (Ultimate) Rear Exit Horizontal	Page 22
Extension & Offset Kits for Direct Vent	Page 24
Flue Accessories for Direct Vent	Page 25

Direct Vent Inbuilt Zero Clearance Flue Kits

Grenada & Calais Vertical Kit	Page 26
Grenada & Calais Horizontal Kit	Page 28
Roma Vertical Kit	Page 30
Newport Vertical Kit	Page 31
Roma, Newport & Newport Pier Horizontal Kit	Page 32
Extension & Offset Kits for Direct Vent	Page 24



Masport

ORDERING

To avoid delays, or the wrong product being despatched when ordering product, please quote the Masport product code and Description.

GOODS RETURNED FOR CREDIT

Before goods are returned for credit, approval must be obtained from our Customer Service Team and a Goods Return Authority (GRA) number issued.

- Any goods that are agreed to be faulty or damaged on arrival or supplied in error by Masport Limited will be accepted for return. Masport Limited will either replace or credit these goods.*
- All goods must be returned in original condition & packaging with the Goods Return Authority number clearly marked. Your GRA number will remain valid for 30 days from its issue date. Please return items to our designated warehouse within this timeframe.*
- Items returned to Masport Limited without prior arrangement are subject to a handling fee.*
- Goods returned to Masport Ltd by prior arrangement, may incur the following restocking fees:*

Spare Parts:	20% of net item value (minimum \$5)
Units:	\$25 per unit

A Goods Return Authorisation number can be obtained by contacting our Customer Service Team:

***For installation enquires contact:
your local Retailer / Installer***

***For Parts & availability enquires contact:
09 571 1200 and press 1***

***For Technical enquires contact:
09 571 1200 and press 2***

**MASPORT - HEAD OFFICE
1-37 Mt Wellington Highway
Panmure
Auckland 6**

Gasfire Flue Kits

Product Description

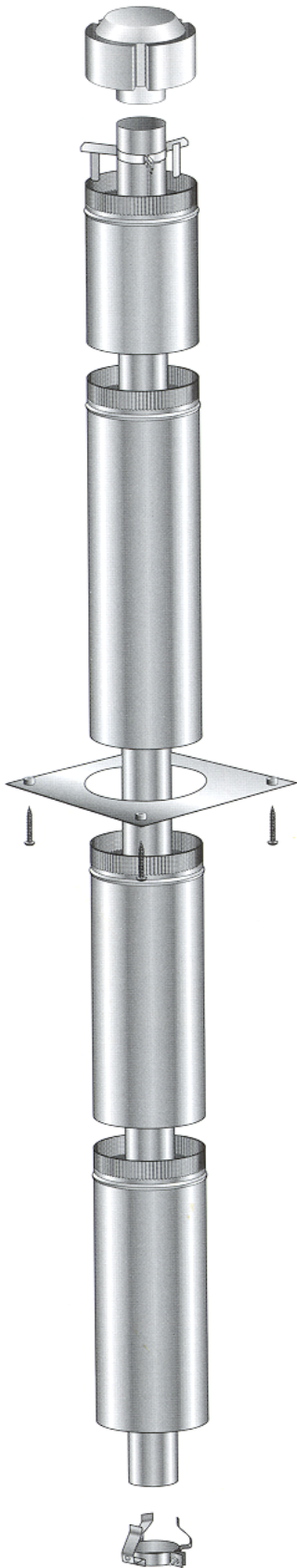
Part Number

**B Vent Gas Flue Kit
- Metallic Black
(galvanised)**

588649



Geneva (Ultimate)

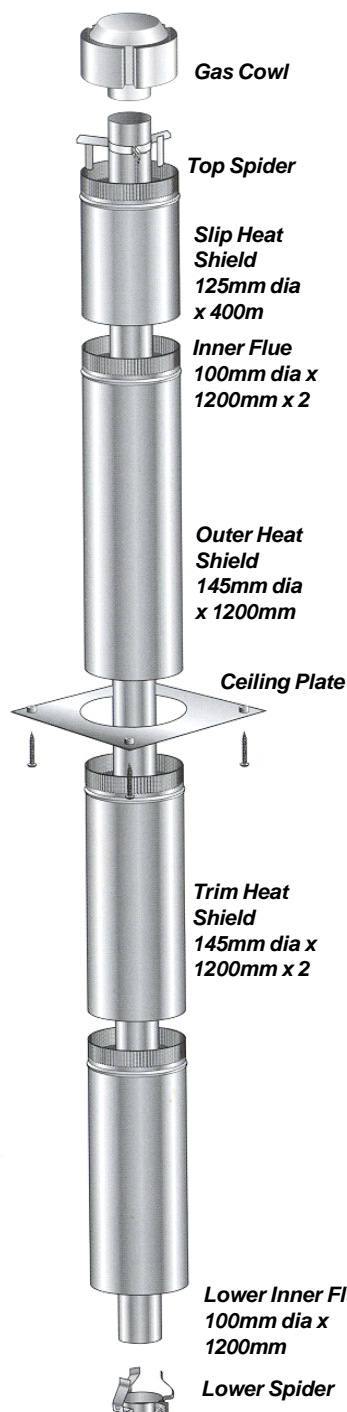


This kit contains: Gas Cowl, Top Spider, Slip Liner 400mm, Outer Liner 1200mm, Ceiling Plate, Screws and Spacers x 4, Blue Black Trim Liners 1200mm x 2, Inner Flue Crimped 1200mm x 2, Inner Flue Plain 1200mm x 1.

Will fit Masport Geneva (Ultimate) Gas Fires

Gasfire Flue Kit - Metallic Black - Installation Instructions

This flue kit has been manufactured in accordance with NZS 5261:1996. To ensure safety this flue kit must be installed as outlined in these instructions. Heater and flue clearances from combustible walls must be in accordance with Masport's specifications and NZS 5261:1996.



1. Locate heater in its proposed position and mark a point on the ceiling that is directly above the centre of the heater's flue outlet. Check that the heater's location allows the OUTER HEAT SHIELD to clear all structural roof timbers.
2. Cut a 150mm square hole in ceiling. Directly above cut a hole in roof to accommodate OUTER HEAT SHIELD.
3. Fit timber nogs around ceiling and roof holes, if necessary.
4. Position the OUTER HEAT SHIELD so that it is flush with the underneath of the ceiling and protrudes through the roof the required height. When calculating roof penetration height allow for an extra 300mm that can be achieved by using the OUTER HEAT SHIELD SLIP EXTENSION.

The FLUE is required to be at least 500mm above the nearest point on any part of the roof. It is recommended that in some instances extending the FLUE above the ridge line will be necessary. Refer to NZS 5262:2003 for more information. Additional HEAT SHIELDS may have to be added to ensure the correct roof penetration heights are obtained.

5. Fix an appropriate flashing around the OUTER HEAT SHIELD to seal onto the roofing material.
6. Insert one FLUE TRIM length into OUTER HEAT SHIELD (with the swaged and crimped end uppermost) a sufficient distance to allow the lower FLUE TRIM length(s) to be installed.
7. Fix FLUE TRIM lengths together ensuring seams are in line.
8. Assemble the 100mm inner FLUE PIPES together ensuring all seams are in line using 3 pop rivets, or screws and seal.
9. Fit FLUE SPACER BRACKETS to FLUE if necessary to maintain air gap between FLUE PIPES and OUTER HEAT SHIELD or FLUE TRIM.
10. Lift FLUE TRIM lengths sufficiently to insert CEILING PLATE over heater flue spigot, ensuring the folded edge upstands are facing the ceiling.
11. Fasten CEILING PLATE to ceiling using screws and spacers provided. Ensure an even gap around FLUE TRIM when fixing.
12. Lower 100mm inner FLUE PIPES from the roof into the OUTER HEAT SHIELD and onto the heater flue outlet. Lift FLUE TRIM for access and seal FLUE to heater stub.
13. Lower FLUE TRIM into position on top of heater.
14. Before securing the SLIP EXTENSION OUTER HEAT SHIELD to the OUTER HEAT SHIELD ensure the FLUE extends above the top of the SLIP EXTENSION OUTER HEAT SHIELD by a maximum of 25mm. Adjust SLIP EXTENSION to obtain this measurement.

15. Fix TOP FLUE SPACER BRACKET to the FLUE making sure lugs fit snugly inside OUTER HEAT SHIELD or SLIP EXTENSION if used. Make sure TOP FLUE SPACER BRACKET fits down hard into the SLIP EXTENSION OUTER HEAT SHIELD.
16. Fit GAS COWL into FLUE pushing down fully onto TOP FLUE SPACER BRACKET.

**Flue Kit Part
Number:
588649**

N.B. It is the responsibility of the installer to ensure that the installation of this flue kit complies with Masport's specifications for flues and that relevant Local Body requirements are adhered to.

Will fit Masport Geneva (Ultimate) Gas Fires

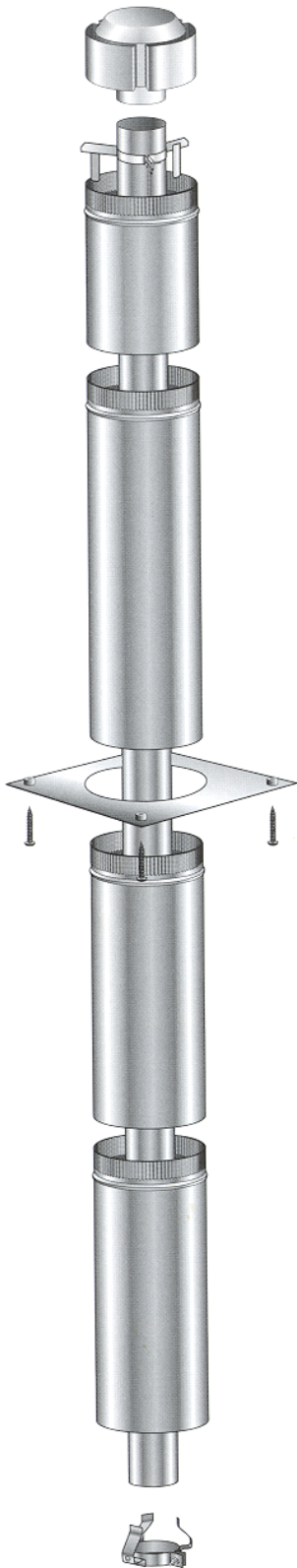
Gasfire Flue Kits

Product Description

Part Number

**B Vent Gas Flue Kit
- Blue Black
(galvanised)**

588656



Cardrona (Baltimore)



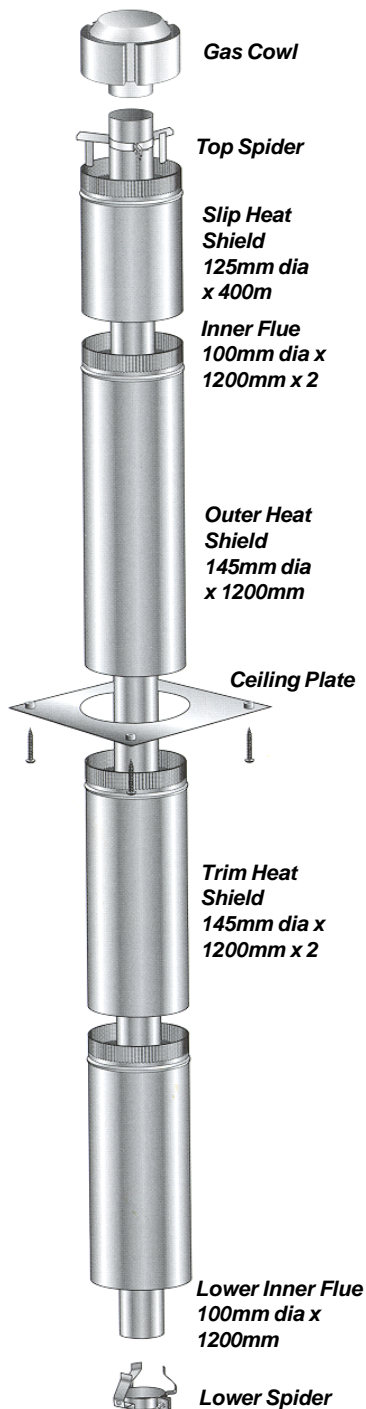
Monaco

This kit contains: Gas Cowl, Top Spider, Slip Liner 400mm, Outer Liner 1200mm, Ceiling Plate, Screws and Spacers x 4, Blue Black Trim Liners 1200mm x 2, Inner Flue Crimped 1200mm x 2, Inner Flue Plain 1200mm x 1, Lower Spider x 1

Will fit Masport Cardrona (Baltimore) & Monaco Gas Fires

Gas Flue Kit - Blue Black - Installation Instructions

This flue kit has been manufactured in accordance with NZS 5261:1996. To ensure safety this flue kit must be installed as outlined in these instructions. Heater and flue clearances from combustible walls must be in accordance with Masport's specifications and NZS 5261:1996.



1. Locate heater in its proposed position and mark a point on the ceiling that is directly above the centre of the heater's flue outlet. Check that the heater's location allows the OUTER HEAT SHIELD to clear all structural roof timbers.
2. Cut a 150mm square hole in ceiling. Directly above cut a hole in roof to accommodate OUTER HEAT SHIELD.
3. Fit timber nogs around ceiling and roof holes, if necessary.
4. Position the OUTER HEAT SHIELD so that it is flush with the underneath of the ceiling and protrudes through the roof the required height. When calculating roof penetration height allow for an extra 300mm that can be achieved by using the OUTER HEAT SHIELD SLIP EXTENSION.

The FLUE is required to be at least 500mm above the nearest point on any part of the roof. It is recommended that in some instances extending the FLUE above the ridge line will be necessary. Refer to NZS 5262:2003 for more information. Additional HEAT SHIELDS may have to be added to ensure the correct roof penetration heights are obtained.

5. Fix an appropriate flashing around the OUTER HEAT SHIELD to seal onto the roofing material.
6. Insert one FLUE TRIM length into OUTER HEAT SHIELD (with the swaged and crimped end uppermost) a sufficient distance to allow the lower FLUE TRIM length(s) to be placed into the heater top panel.
7. Fix FLUE TRIM lengths together ensuring seams are in line.
8. Assemble the 100mm inner FLUE PIPES together ensuring all seams are in line using 3 pop rivets, or screws and seal.
9. Fit FLUE SPACER BRACKETS to FLUE if necessary to maintain air gap between FLUE PIPES and OUTER HEAT SHIELD or FLUE TRIM.
10. Lift FLUE TRIM lengths sufficiently to insert CEILING PLATE over heater flue spigot, ensuring the folded edge upstands are facing the ceiling.
11. Fasten CEILING PLATE to ceiling using screws and spacers provided. Ensure an even gap around FLUE TRIM when fixing.
12. Lower 100mm inner FLUE PIPES from the roof into the OUTER HEAT SHIELD and onto the heater flue outlet. Lift FLUE TRIM for access and seal FLUE to heater stub.
13. Lower FLUE TRIM into position on top of heater.
14. Before securing the SLIP EXTENSION OUTER HEAT SHIELD to the OUTER HEAT SHIELD ensure the FLUE extends above the top of the SLIP EXTENSION OUTER HEAT SHIELD by a maximum of 25mm. Adjust SLIP EXTENSION to obtain this measurement.
15. Fix TOP FLUE SPACER BRACKET to the FLUE making sure lugs fit snugly inside OUTER HEAT SHIELD or SLIP EXTENSION if used. Make sure TOP FLUE SPACER BRACKET fits down hard into the SLIP EXTENSION OUTER HEAT SHIELD.
16. Fit GAS COWL into FLUE pushing down fully onto TOP FLUE SPACER BRACKET.

**Flue Kit Part
Number:
588656**

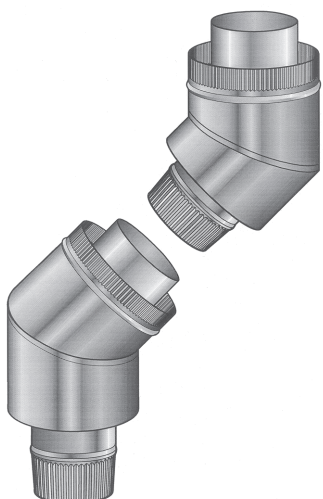
N.B. It is the responsibility of the installer to ensure that the installation of this flue kit complies with Masport's specifications for flues and that relevant Local Body requirements are adhered to.

Will fit Masport Cardrona (Baltimore) & Monaco Gas Fires

Off Set and Extension Kit - Metallic Black



Geneva (Ultimate)
'B' Vent Only

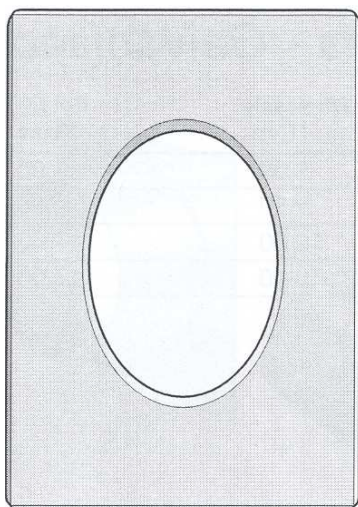


**Off Set Kit - Room
(Painted)**

Part No: 588668

**Off Set Kit - Roof
(Unpainted)**

Part No: 588669



**45° Ceiling Plate
(Unpainted)**

Part No: 556315

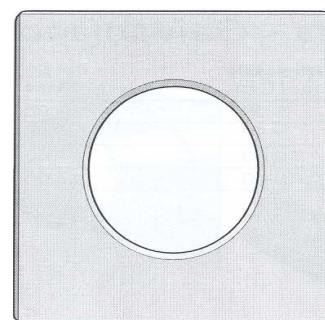


**Extension Kit - Room
(Painted)**

Part No: 588670

**Extension Kit - Roof
(Unpainted)**

Part No: 588672



**30° Ceiling Plate
(Unpainted)**

Part No: 551497

Will fit Masport Geneva (Ultimate) Gas Fires

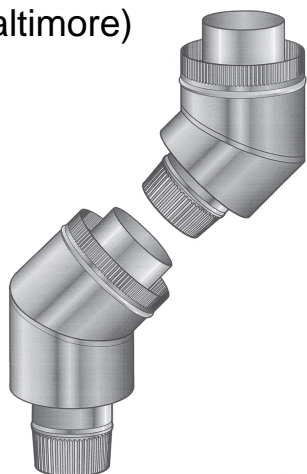
Off Set and Extention Kit - Blue Black



Cardrona (Baltimore)



Monaco

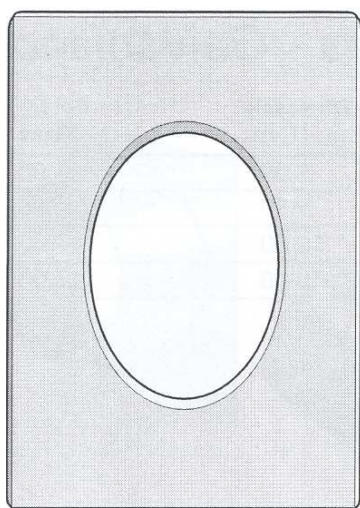


**Off Set Kit - Room
(Painted)**

Part No: 588676

**Off Set Kit - Roof
(Unpainted)**

Part No: 588669



**45° Ceiling Plate
(Unpainted)**

Part No: 556315

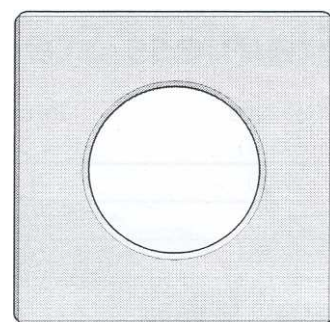


**Extension Kit - Room
(Painted)**

Part No: 588677

**Extension Kit - Roof
(Unpainted)**

Part No: 588672



**30° Ceiling Plate
(Unpainted)**

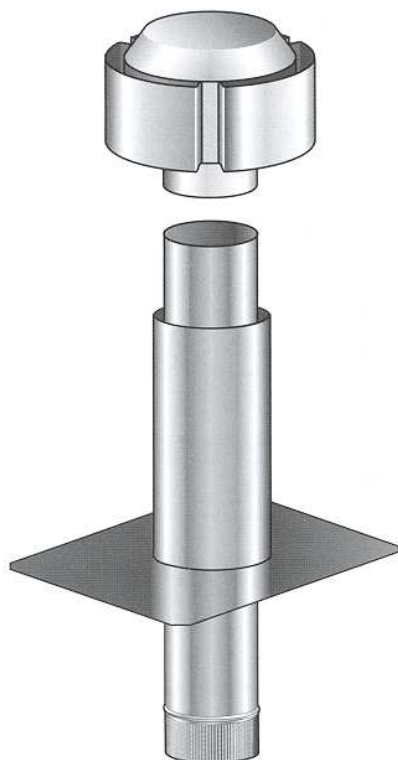
Part No: 551497

Will fit Masport Cardrona (Baltimore) & Monaco Gas Fires

Masonry Flue Kit

Product Description

Part Number



Masonry Flue Kit - 4m

588651



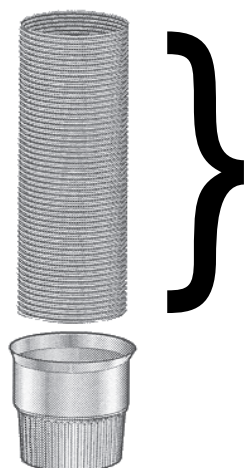
Piccolo



Sofia



Madrid



**Masonry Chimney
Extension Kit
- 3.6 metres**

551509

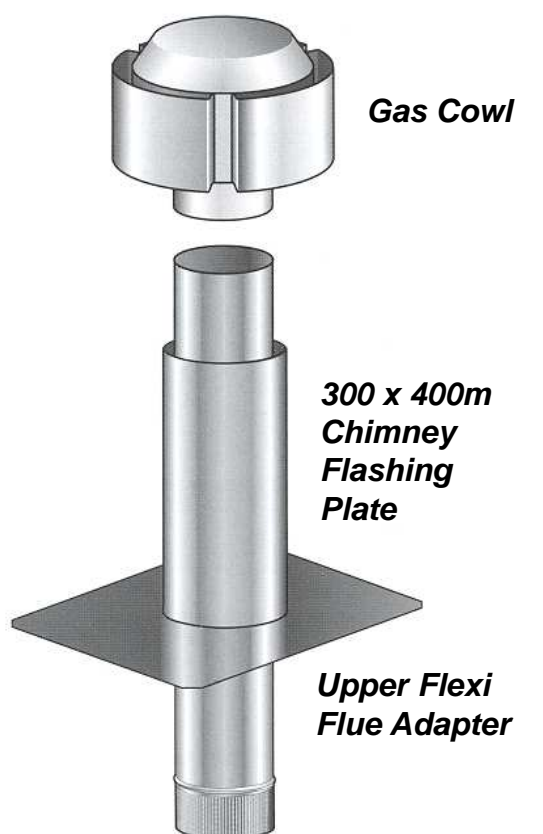
This kit contains: Gas Cowl, Chimney Flashing Plate, Upper Flexi Flue, Lower Flexi Adapter, Flexi Flue 3.6 metre.

Will fit Masport Piccolo, Sofia & Madrid Gas Fires

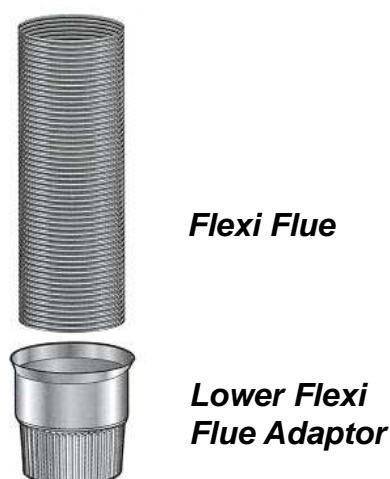
Masonry Chimney Gas Flue Kit Installation Instructions

This flue kit has been manufactured in accordance with NZS 5261:1996. To ensure safety this flue kit must be installed as outlined in these instructions. The appliance to which it is connected must be installed in accordance with Masport's specifications and NZS 5261:1996.

FLEXI-FLUE LINER is manufactured in type 3003 Aluminium Alloy 2 ply .26mm thick to comply with NZS 5261:1996 and AGA 601:1998



1. Ensure the chimney is clean and free of soot. Check the chimney for structural soundness.
2. Check height of chimney to ensure FLEXI-FLUE LINER length is sufficient for installation.
3. Stretch FLEXI-FLUE LINER to extended length of 3.6 metres. If extra length is required in the flue liner 1 00mm stainless steel pipe can be added (crimped end into the FLEXI-FLUE) or using a FLEXI-FLUE ADAPTOR additional FLEXI-FLUE added.
4. Secure UPPER FLEXI-FLUE ADAPTOR to FLEXI-FLUE (crimped end into the FLEXI-FLUE).
5. Push FLEXI-FLUE fully into LOWER FLEXI-FLUE ADAPTOR and twist anti-clockwise so the pressed tangs on the ADAPTOR grip and secure the FLUE.
6. Insert UPPER FLEXI-FLUE ADAPTOR into CHIMNEY FLASHING PLATE and ensuring top is flush. Secure with rivets or screws.
7. Lower FLEXI-FLUE LINER into chimney.
8. Secure CHIMNEY FLASHING PLATE to chimney with suitable fasteners and weather seal to the chimney top with mortar and/or silicone.
9. Fit GAS COWL into FLUE.



Flue Kit Part Number: 588651

N.B. It is the responsibility of the installer to ensure that the installation of this flue kit complies with Masport's specifications for flues and that relevant Local Body requirements are adhered to.

Will fit Masport Piccolo, Sofia & Madrid Gas Fires

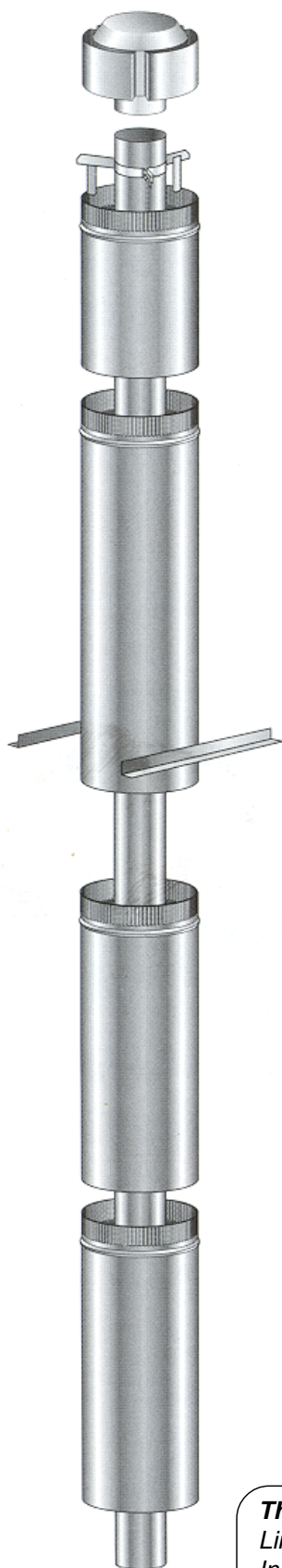
Gasfire Flue Kits - Zero Clearance

Product Description

Part Number

Zero Clearance
Flue Kit

588650



Piccolo



Sofia



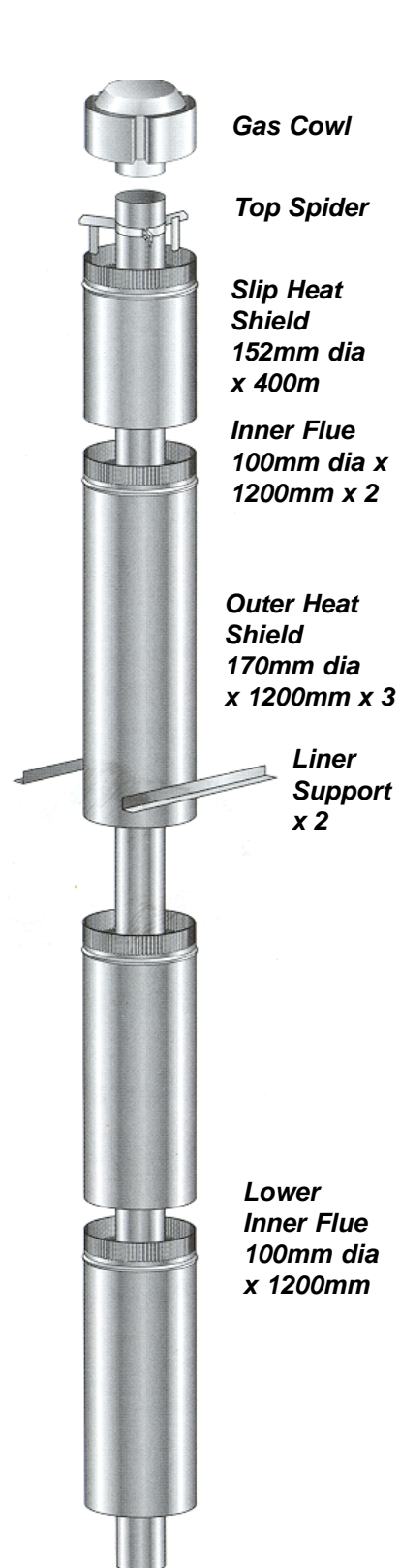
Madrid

This kit contains: Gas Cowl, Slip Liner 400mm, Outer Liner 1200mm x 3, Inner Flue Crimped 1200mm x 2, Inner Flue Plain 1200mm x 1, Lower Spider x 1, Liner Supports x 2

Will fit Masport Piccolo, Sofia & Madrid Gas Fires

Zero Clearance Gas Flue Kit Installation Instructions

This flue kit has been manufactured in accordance with NZS 5261:1996. To ensure safety this flue kit must be installed as outlined in these instructions. Heater and flue clearances from combustible walls must be in accordance with Masport's specifications and NZS 5261:1996.



1. Locate heater in its proposed position and mark the points for penetration that are directly above the centre of the heater's flue outlet. Check that the heater's location allows the OUTER HEAT SHIELD to clear all structural timbers.
2. Cut 200mm square holes where penetration is required to accommodate OUTER HEAT SHIELD. **NB: A minimum 25mm clearance is required between OUTER HEAT SHIELD and combustible surfaces.**
3. Fit timber nogs around holes where necessary.
4. Assemble OUTER HEAT SHIELD lengths together ensuring seams are in line and secure with 3 rivets or self-tapping screws. Lower OUTER HEAT SHIELD through roof or chimney structure and fit to heater spigot. Check height on the OUTER HEAT SHIELD penetrates roof or chimney structure. When calculating roof penetration height allow for an extra 300mm that can be achieved by using the OUTER HEAT SHIELD SLIP EXTENSION.

The flue is required to be at least 500mm above the nearest point on any part of the roof. It is recommended that in some instances extending the flue above the ridge line will be necessary. Refer to NZS 5262:2003 for more information. Additional HEAT SHIELDS may have to be added to ensure the correct roof penetration heights are obtained.

5. Assemble the 100mm inner FLUE PIPES together ensuring all seams are in line using 3 pop rivets or screws and seal joints with appropriate sealant.
6. Fit FLUE SPACER BRACKETS to FLUE if necessary to maintain air gap between FLUE PIPES and OUTER HEAT SHIELD.
7. Lower stainless steel FLUE PIPES from the roof into the OUTER HEAT SHIELD and onto the heater flue outlet. Lift OUTER HEAT SHIELD for access and seal flue to heater stub.
8. Secure OUTER HEAT SHIELD to heater, if necessary.
9. Using ANGLE BRACKETS secure OUTER HEAT SHIELD to nogs around penetration holes **NB: A minimum 25mm clearance is required between OUTER HEAT SHIELD and combustible surfaces.**
10. Fix an appropriate flashing around the OUTER HEAT SHIELD to seal onto the roofing or chimney material.
11. Before securing the SLIP EXTENSION OUTER HEAT SHIELD to the OUTER HEAT SHIELD ensure the flue extends above the top of the SLIP EXTENSION OUTER HEAT SHIELD 25mm. Adjust SLIP EXTENSION to obtain this measurement.
12. Fix TOP FLUE SPACER BRACKET to the FLUE making sure lugs fit snugly inside OUTER HEAT SHIELD.
13. Fit GAS COWL into flue pushing down fully onto TOP SPACER BRACKET.

Flue Kit Part Number: 588650

N.B. It is the responsibility of the installer to ensure that the installation of this flue kit complies with Masport's specifications for flues and that relevant Local Body requirements are adhered to.

Will fit Masport Piccolo, Sofia & Madrid Gas Fires

Gasfire Flue Kits - Zero Clearance

Product Description

Part Number

Zero Clearance
Flue Kit

588650



Surefire G51

This kit contains: Gas Cowl, Outer Liner 1200mm x 250mm x 3, Inner Flue Crimped 1200mm x 200mm x 3.

Will fit Surefire G51 Gas Fire

Zero Clearance Gas Flue Kit Installation Instructions

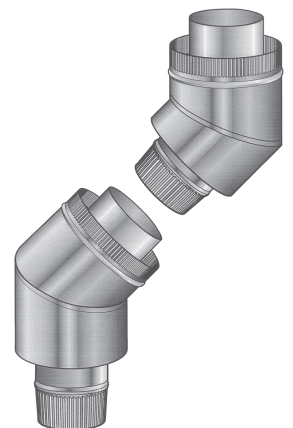
This flue kit has been manufactured in accordance with NZS 5261:1996. To ensure safety this flue kit must be installed as outlined in these instructions. Heater and flue clearances from combustible walls must be in accordance with Masport's specifications and NZS 5261:1996.



1. Locate heater in its proposed position and mark the points for penetration that are directly above the centre of the heater's flue outlet. Check that the heater's location allows the OUTER HEAT SHIELD to clear all structural timbers.
2. Cut 300mm square holes where penetration is required to accommodate OUTER HEAT SHIELD. **NB: A minimum 25mm clearance is required between OUTER HEAT SHIELD and combustible surfaces.**
3. Fit timber nogs around holes where necessary.
4. Assemble OUTER HEAT SHIELD lengths together ensuring seams are in line and secure with 3 rivets or self-tapping screws. Lower OUTER HEAT SHIELD through roof or chimney structure and fit to heater spigot. Check height on the OUTER HEAT SHIELD penetrates roof or chimney structure.

The flue is required to be at least 500mm above the nearest point on any part of the roof. It is recommended that in some instances extending the flue above the ridge line will be necessary. Refer to NZS 5262:2003 for more information. Additional HEAT SHIELDS may have to be added to ensure the correct roof penetration heights are obtained.

5. Assemble the 200mm inner FLUE PIPES together ensuring all seams are in line using 3 pop rivets or screws and seal joints with appropriate sealant.
6. Fit FLUE SPACER BRACKETS to FLUE if necessary to maintain air gap between FLUE PIPES and OUTER HEAT SHIELD.
7. Lower stainless steel FLUE PIPES from the roof into the OUTER HEAT SHIELD and onto the heater flue outlet. Lift OUTER HEAT SHIELD for access and seal flue to heater stub.
8. Secure OUTER HEAT SHIELD to heater, if necessary.
9. Using ANGLE BRACKETS secure OUTER HEAT SHIELD to nogs around penetration holes **NB: A minimum 25mm clearance is required between OUTER HEAT SHIELD and combustible surfaces.**
10. Fix an appropriate flashing around the OUTER HEAT SHIELD to seal onto the roofing or chimney material.
11. Fit GAS COWL into flue pushing down fully.



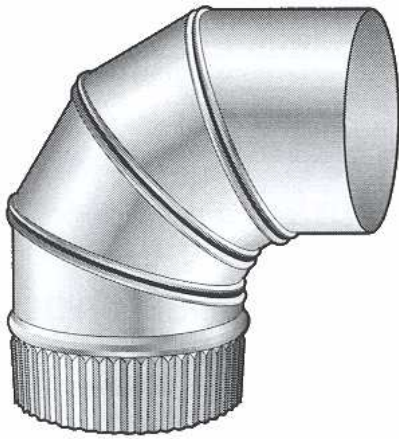
Offset Kit
Part No: 552344

Flue Kit Part Number: 552343

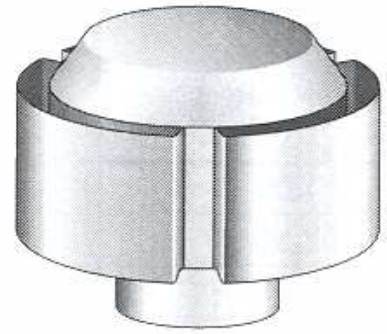
N.B. It is the responsibility of the installer to ensure that the installation of this flue kit complies with Masport's specifications for flues and that relevant Local Body requirements are adhered to.

Will fit Masport Surefire G51 Gas Fire

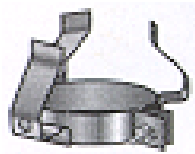
Extension and Parts List



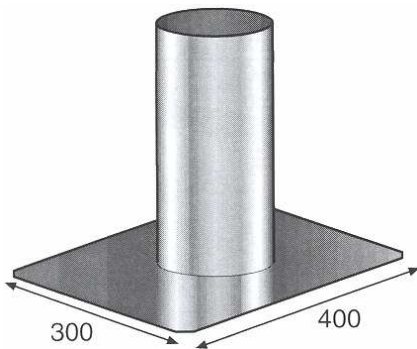
100mm Adjustable Bend
Part No: 551496



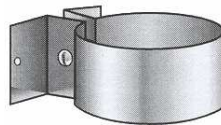
100mm Anti-Down Draught Gas cowl
Part No: 551484



Flue Spacer
Part No: 551491



Chimney Flashing Plate
Part No: 551488



Support Bracket
Part No: 551487



100mm Galvanized Flue
Length - 1200mm
Part No: 556316



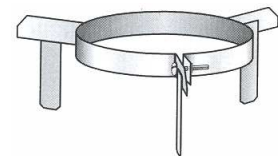
100mm Stainless Steel Flue
Length - 1200mm
Part No: 551482



Masonry Chimney Extension Kit
Part No: 551509

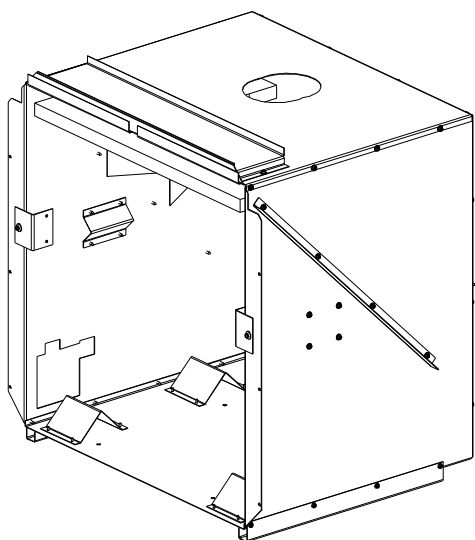


**Expandable to
3.6 metres**

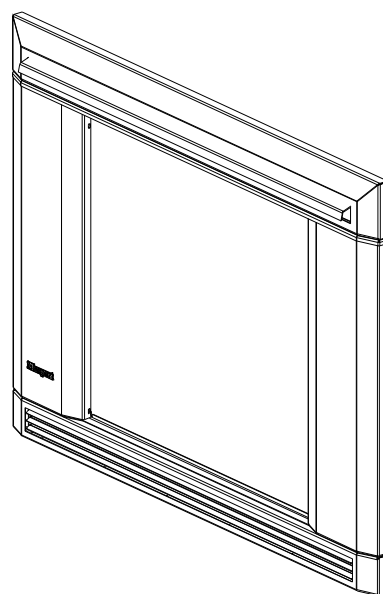


Top Flue Spacer Bracket
Part No: 556095

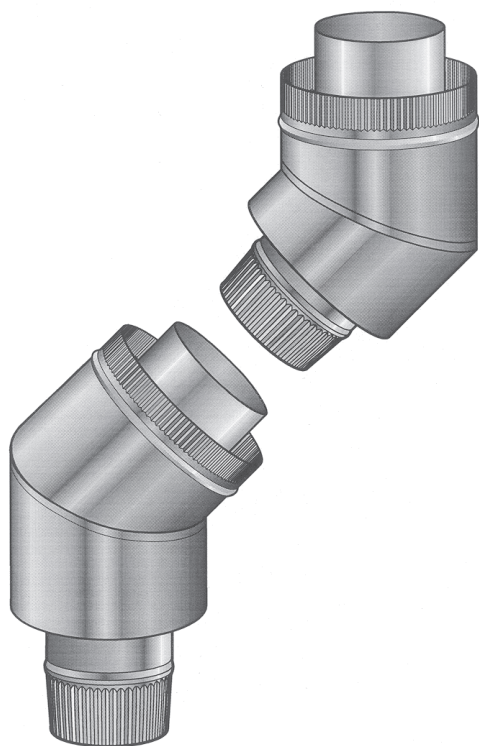
Inbuilt Zero Clearance Kit and Accessories



**Zero Clearance Box
for Piccolo, Sofia & Madrid**
Part No: 990940



Zero Clearance Fascia
Piccolo Part No: 990941
Sofia Part No: 990939
Madrid Part No: 990943



Offset Kit
Part No: 588669



Extension Kit
Part No: 588672

Will fit Masport Piccolo, Sofia & Madrid Gas Fires

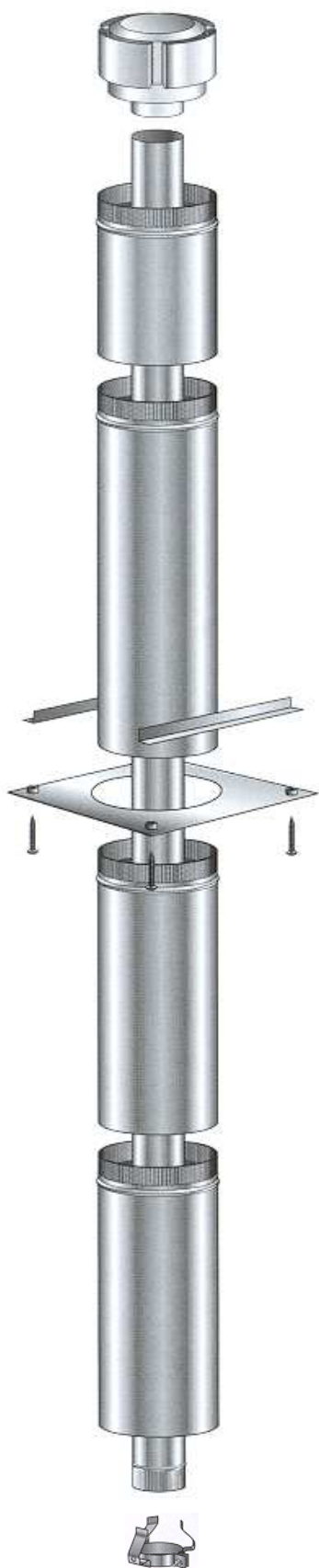
DV Top Exit Vertical Flue Kit

Product Description

Part Number

DV Top Exit Vertical
Flue Kit

588653



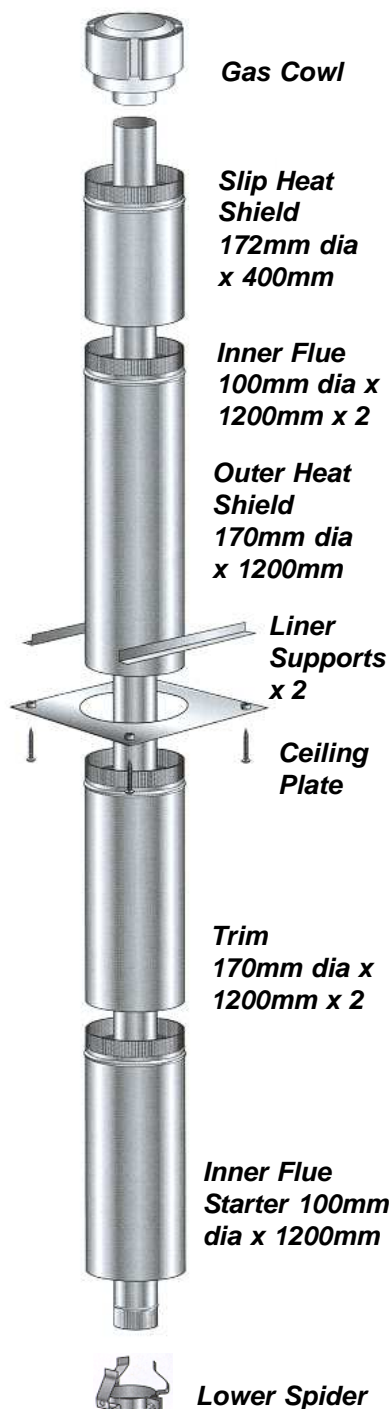
Geneva (Ultimate) Direct Vent Top Exit

This kit contains: Gas Cowl DV, Slip Liner, Outer Liner 1200mm, Ceiling Plate, Screws and Spacers x 4, Trim Liners 1200mm x 2, Inner Flue Crimped 1200mm x 2, Inner Flue Starter 1200mm x 1, Centralising Spider, Liner Supports x 2, Mil-Pac Sealant x 1

Will fit Masport Geneva (Ultimate) Direct Vent Gas Fires

DV Top Exit Vertical Flue Kit Installation Instructions

This flue kit has been manufactured in accordance with NZS 5261:1996. To ensure safety this flue kit must be installed as outlined in these instructions. Heater and flue clearances from combustible walls must be in accordance with Masport's specifications and NZS 5261:1996.



1. Locate heater in its proposed position and mark a point on the ceiling that is directly above the centre of the heater's flue outlet. Check that the heater's location allows the OUTER HEAT SHIELD to clear all structural roof timbers.
2. Cut a 250mm square hole where penetration is required to accommodate OUTER HEAT SHIELD. **NB: A minimum 40mm clearance is required between OUTER HEAT SHIELD and combustible surfaces.**
3. Fit timber nogs around ceiling and roof holes where necessary.
4. Measure overall length of OUTER HEAT SHIELD and FLUE TRIM required. Fix OUTER HEAT SHIELD length(s) to painted FLUE TRIM length, ensuring swaged and crimped end is uppermost, with 3 rivets or self-tapping screws. Insert assembled lengths up through ceiling penetration hole. Fix additional painted FLUE TRIM lengths and continue to raise through roof cavity. Check height the OUTER HEAT SHIELD penetrates roof structure. When calculating roof penetration height, allow for an extra 300mm that can be achieved by using the OUTER HEAT SHIELD SLIP EXTENSION.

The flue is required to be at least 500mm above the nearest point on any part of the roof. It is recommended that in some instances extending the flue above the ridgeline will be necessary. Refer to NZS 5262:2003 for more information. Additional HEAT SHIELDS may have to be added to ensure the correct roof penetration heights are obtained.

5. Lift painted FLUE TRIM lengths sufficiently to insert CEILING PLATE over heater flue spigot, ensuring the folded edge upstands are facing the ceiling.
6. Assemble the 100mm stainless steel FLUE PIPES together ensuring all seams are in line using 3 pop rivets or screws and seal FLUE with Mil-Pac sealant (supplied with kit).
7. Fit FLUE SPACER BRACKETS to FLUE if necessary to maintain air gap between FLUE PIPES and OUTER HEAT SHIELD.
8. Lower stainless steel FLUE PIPES from the roof into the OUTER HEAT SHIELD (crimped ends towards the heater) and into the heaterflue outlet. Lift OUTER HEAT SHIELD for access and seal FLUE to heater stub with appropriate sealant
9. Secure FLUE TRIM LENGTH to heater, if necessary.
10. Using ANGLE BRACKETS secure OUTER HEAT SHIELD to nogs around penetration holes. **NB: A minimum 40mm clearance is required between OUTER HEAT SHIELD and combustible surfaces.**
11. Fix an appropriate flashing around the OUTER HEAT SHIELD to seal onto the roofing or chimney material.
12. Before securing the SLIP EXTENSION OUTER HEAT SHIELD to the OUTER HEAT SHIELD ensure the FLUE extends above the top of the SLIP EXTENSION OUTER HEAT SHIELD 50mm. Adjust SLIP EXTENSION to obtain this measurement.

Flue Kit Part Number:
588653

13. Fit GAS COWL into FLUE pushing down fully onto SLIP EXTENSION OUTER HEAT SHIELD. Secure GAS COWL to SLIP EXTENSION OUTER HEAT SHIELD using 3 pop rivets or screws.
14. Fasten CEILING PLATE to ceiling using screws and spacers provided. Ensure an even gap around FLUE TRIM when fixing.

N.B. It is the responsibility of the installer to ensure that the installation of this flue kit complies with Masport's specifications for flues and that relevant Local Body requirements are adhered to.

Will fit Masport Geneva (Ultimate) Direct Vent Gas Fires

DV Top Exit Horizontal Flue Kit

Product Description

Part Number

DV Top Exit Horizontal
Flue Kit - Metallic Black

588665



This kit contains: Riser Cowl, Wall Penetration Unit, Wall Trim Plate, Screws and Spacers x 4, Trim Liner 300mm, Inner Flue 300mm, 85° Outer Bend, 85° Inner Flue Bend, Inner Flue 875mm, Outer Trim Flue 900mm, Mil-Pac Sealant x 1

WARNING:

When installing in a high wind situation, common sense must prevail. Choose a sheltered side of the house.

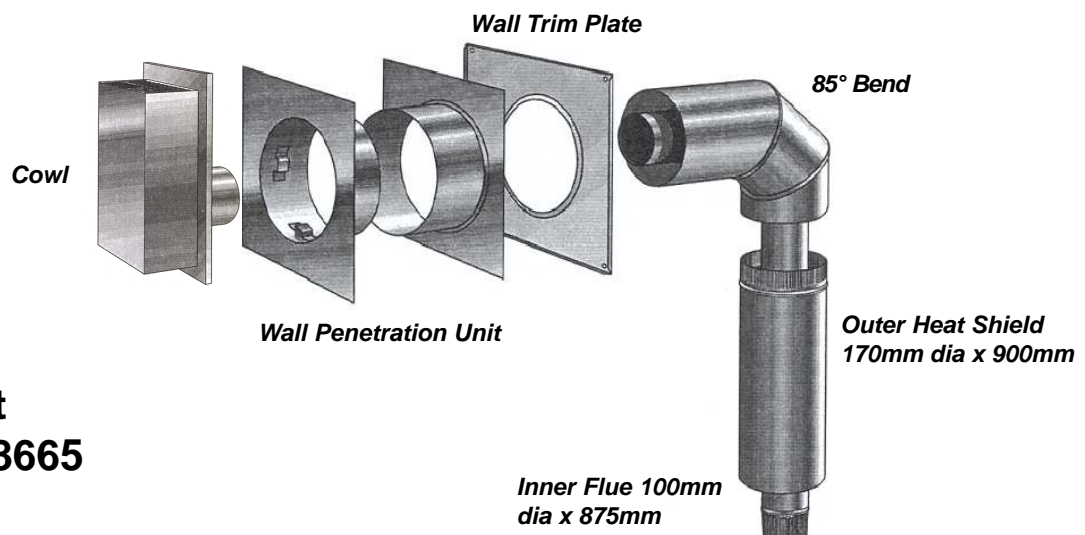
A non-combustible water ingress shelf will need to be fitted 200mm above the terminal to prevent water ingress in extreme conditions or where no soffit shelters the terminal.

Will fit Masport Geneva (Ultimate) Direct Vent Gas Fires

DV Top Exit Horizontal Flue Kit Installation Instructions

This flue kit has been manufactured in accordance with NZS 5261:1996. To ensure safety this flue kit must be installed as outlined in these instructions. Heater and flue clearances from combustible walls must be in accordance with Masport's specifications and NZS 5261:1996.

1. Locate heater in its proposed position and mark a point on the rear wall that is directly behind the centre of the heater's flue outlet and at the required height for wall penetration. To ensure Flue rises sufficiently (10mm per 600mm).
2. Check that the heater location allows the THRU-WALL PENETRATION UNIT to clear all structural wall timbers. To avoid site-trimming position OUTER HEAT SHIELD BEND and OUTER HEAT SHEILD TRIM LENGTH on heater stub to calculate height for penetration.
3. Cut a 250mm square hole through wall structure about centre of marked point. Nog if necessary for structural support. **NB: A minimum 40mm clearance is required between OUTER HEAT SHIELD and combustible surfaces.**
4. Measure overall depth of wall. If necessary site trim THRU-WALL PENETRATION UNIT to required length.
5. Fix THRU-WALL PENETRATION UNIT through wall structure, securing the square flange to outer surface of external wall with fasteners. Fix to inner wall similarly.
6. Measure distance from centre of heater stub to outside surface of wall. Make allowance for overlaps required on WALL PENETRATION COWL stubs and both OUTER HEAT SHIELD BEND and stainless steel FLUE BEND.
7. Fit stainless steel BEND inside OUTER HEAT SHIELD AND then, fix 1 00mm stainless steel FLUE LENGTH and FLUE BEND to required length using pop rivets or self-tapping screws. Seal joints with Mil-Pac flue sealant.
- B. Fix OUTER HEAT SHIELD TRIM LENGTHS to OUTER HEAT SHIELD BEND using pop rivets or screws.
9. Seal FLUE to heater stub using Mil-Pac sealant. Fix FLUE and HEAT SHIELD TRIM LENGTHS to heater stub inserting through wall penetration.
10. Apply flue sealant (supplied) to flue stub of WALL PENETRATION COWL, and insert COWL through wall ensuring flue stub of COWL fits inside FLUE.
11. WALL PENETRATION COWL to outside wall surface. COWL may be painted with high temperature paint.
12. Silicone all external joints to weatherproof.
13. Fit COWL SAFETY CAGE over COWL if necessary.



**Flue Kit Part
Number: 588665**

N.B. It is the responsibility of the installer to ensure that the installation of this flue kit complies with Masport's specifications for flues and that relevant Local Body requirements are adhered to.

Will fit Masport Geneva (Ultimate) Direct Vent Gas Fires

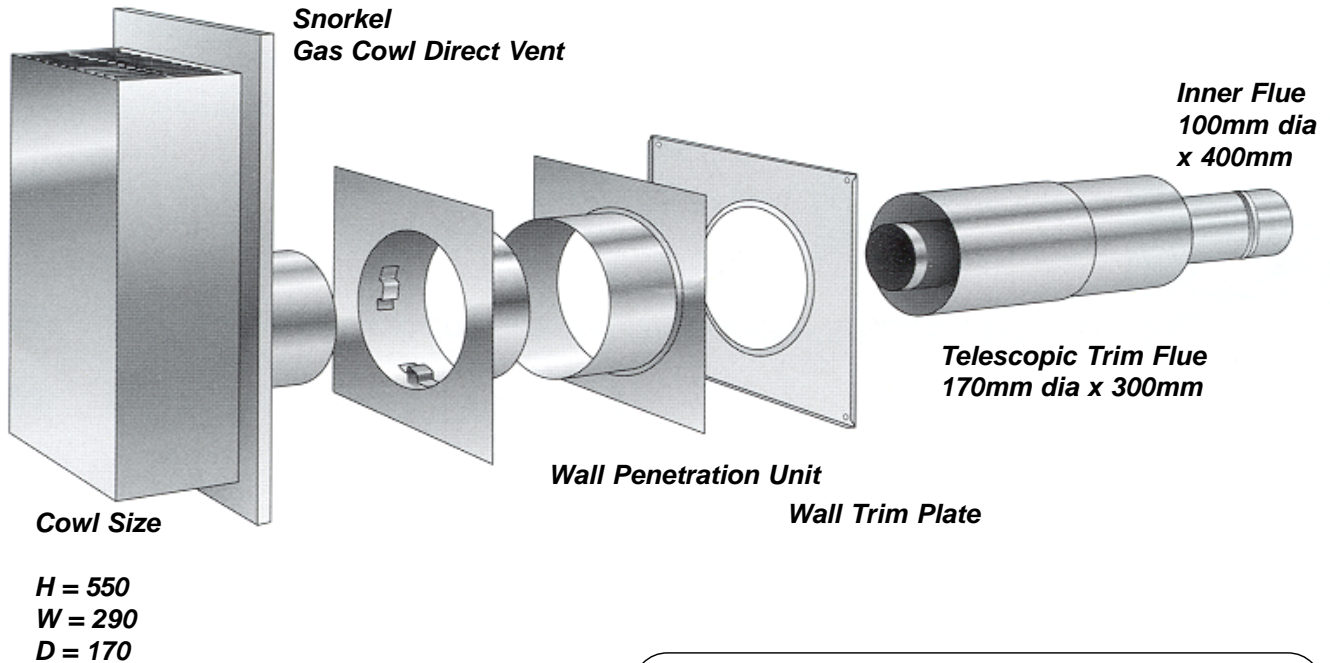
DV Rear Exit Horizontal Flue Kit

Product Description

Part Number

DV Rear Exit Horizontal
Flue Kit - Metallic Black

588652



This kit contains: Snorkel Cowl DV, Wall Penetration Unit, Wall Trim Kit, Screws and Spacers x 4, Telescopic Trim Flue 300mm x 2, Inner Flue 400mm, Mil-Pac Sealant x 1



**DV Corner Installation
Bend Kit**

588655



WARNING:

When installing in a high wind situation, common sense must prevail. Choose a sheltered side of the house.

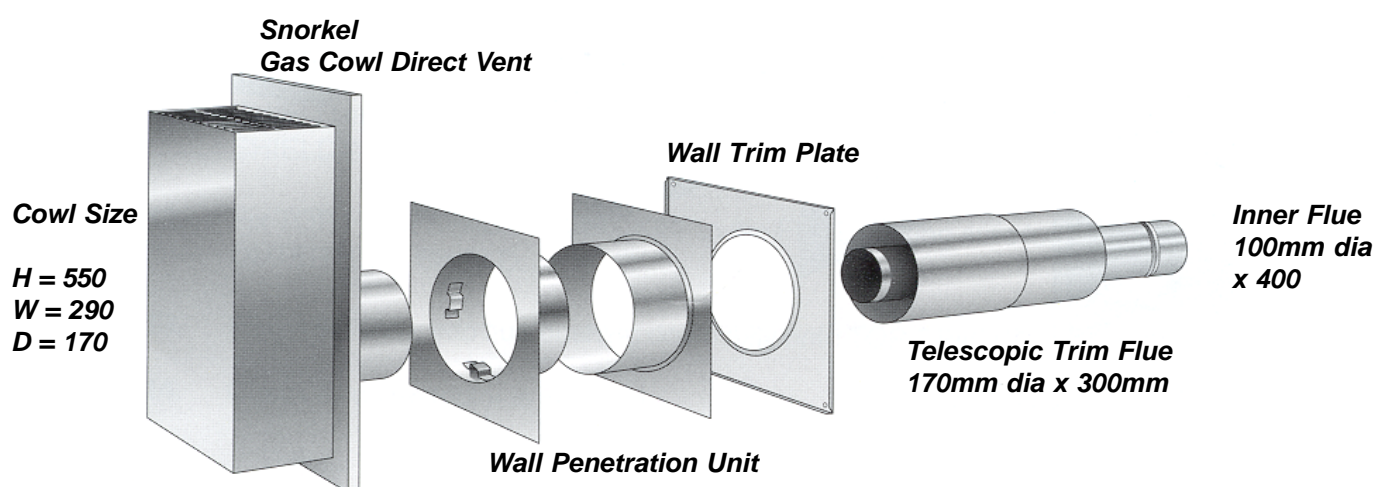
A non-combustible water ingress shelf will need to be fitted 200mm above the terminal to prevent water ingress in extreme conditions or where no soffit shelters the terminal.

Will fit Masport Geneva (Ultimate) Rear Exit Direct Vent Gas Fires

DV Rear Exit Horizontal Flue Kit Installation Instructions

This flue kit has been manufactured in accordance with NZS 5261:1996. To ensure safety this flue kit must be installed as outlined in these instructions. Heater and flue clearances from combustible walls must be in accordance with Masport's specifications and NZS 5261:1996.

1. Locate heater in its proposed position and mark a point on the rear wall that is directly behind the centre the heater's flue outlet. To ensure Flue rises sufficiently (10mm per 600mm) centre of Wall Penetration should be 10mm higher than centre of heater stub. Check that the heater's location allows the THRU-WALL PENETRATION UNIT to clear all structural wall timbers.
2. Cut a 250mm square hole through wall structure about centre of marked point. Nog if necessary for structural support. **NB: A minimum of 40mm clearance is required between OUTER HEAT SHIELD and combustible surfaces.**
3. Measure overall depth of wall. If necessary site trim THRU-WALL PENETRATION UNIT to required length.
4. Fix THRU-WALL PENETRATION UNIT through wall structure, securing the square flange to outer surface of external wall with fasteners. Fix to inner wall similarly.
5. Measure distance of heater stub to outside surface of wall. Make allowance for overlaps required of TELESCOPIC FLUE lengths, heater stub and WALL PENETRATION COWL stub. (Minimum 50mm on each)
6. Fix 100mm stainless steel TELESCOPIC FLUE to required length using pop rivets or self-tapping screws. Seal joints with Mil-Pac sealant (supplied with kit).
7. Fix 170mm TELESCOPIC HEAT SHIELD to required length using pop rivets or self-tapping screws.
8. Place WALL TRIM PLATE over heater flue outlet. Be sure folded edge upstands are towards wall.
9. Insert FLUE and HEAT SHIELD through wall penetration securing both to heater stubs using pop rivets or screws.
10. Apply flue sealant (supplied) to flue stub of WALL PENETRATION COWL, and insert COWL through wall ensuring file stub of COWL fits inside TELESCOPIC FLUE length.
11. Fix WALL PENETRATION COWL to outside wall surface. COWL may be painted with high temperature paint
12. Silicone all external joints to weatherproof.
13. Fasten WALL TRIM PLATE to wall using screws and spacers provided.
14. Fit COWL SAFETY CAGE over COWL if necessary.



N.B. It is the responsibility of the installer to ensure that the installation of this flue kit complies with Masport's specifications for flues and that relevant Local Body requirements are adhered to.

Will fit Geneva (Ultimate) Rear Exit Direct Vent Gas Fires

Direct Vent Off Set and Extension Kit



Geneva (Ultimate) Direct Vent



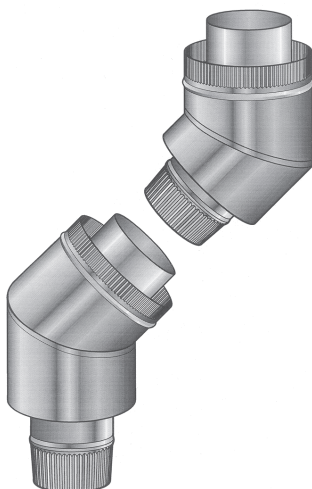
Roma (P33)



Grenada (P36)



Calais P36)



**Off Set Kit - Room/Roof
(Zero Clearance)**

Part No: 588658



**Extension Kit - Room
(Painted)**

Part No: 588675

**Extension Kit - Roof
- Zero Clearance
(Unpainted)**

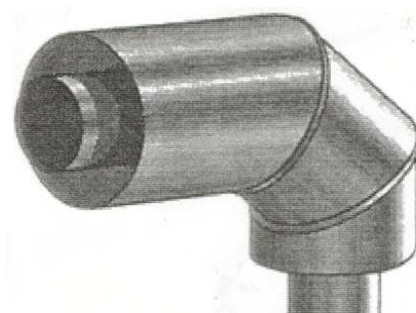
Part No: 588674

Will fit Masport Geneva (Ultimate), Roma, Grenada & Calais Gas Fires

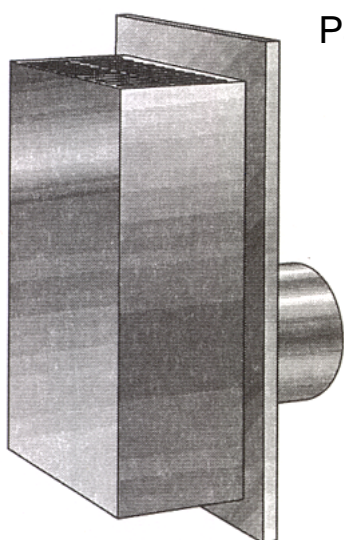
Gas Flue Kit Accessories - D Vent



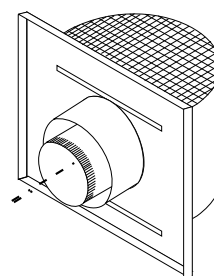
**Direct Vent Cowl
Vertical**
Part No: 556311



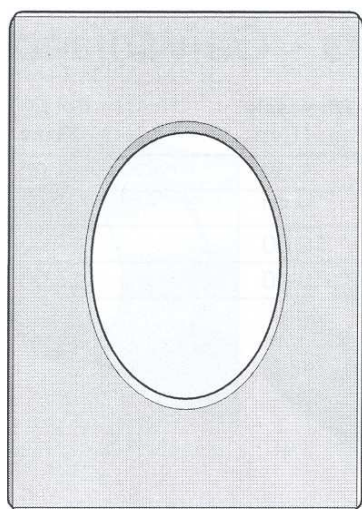
85° Bend
Part No: 556313



Direct Vent Cowl
Part No: 556310



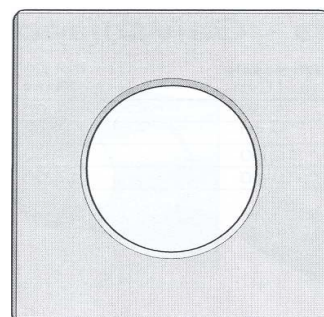
Astro Cowl
Part No: 946-578/P



**45° Ceiling Plate
(Unpainted)**
Part No: 556315



**100mm Stainless Steel
Flue Length - 1200mm**
Part No: 551482



**30° Ceiling Plate
(Unpainted)**
Part No: 556314

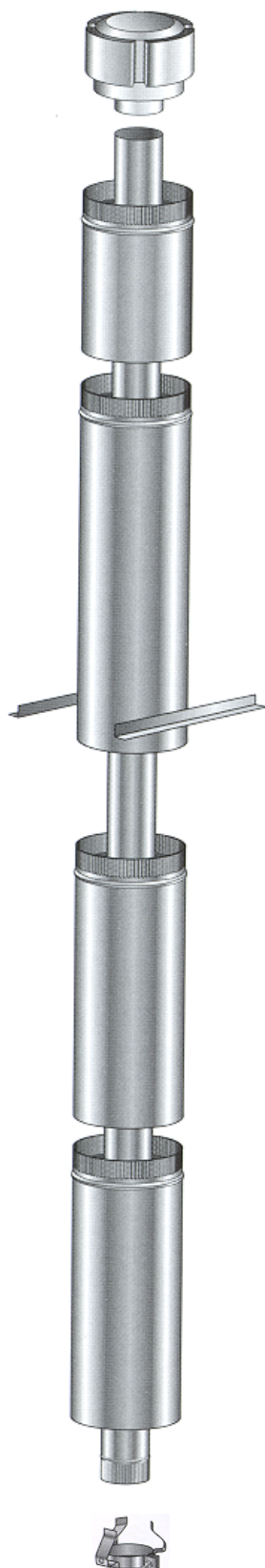
DV Zero Clearance Top Exit Vertical Flue Kit

Product Description

Part Number

**DV Zero Clearance
Top Exit Vertical Flue Kit**

588654



Grenada (P36)



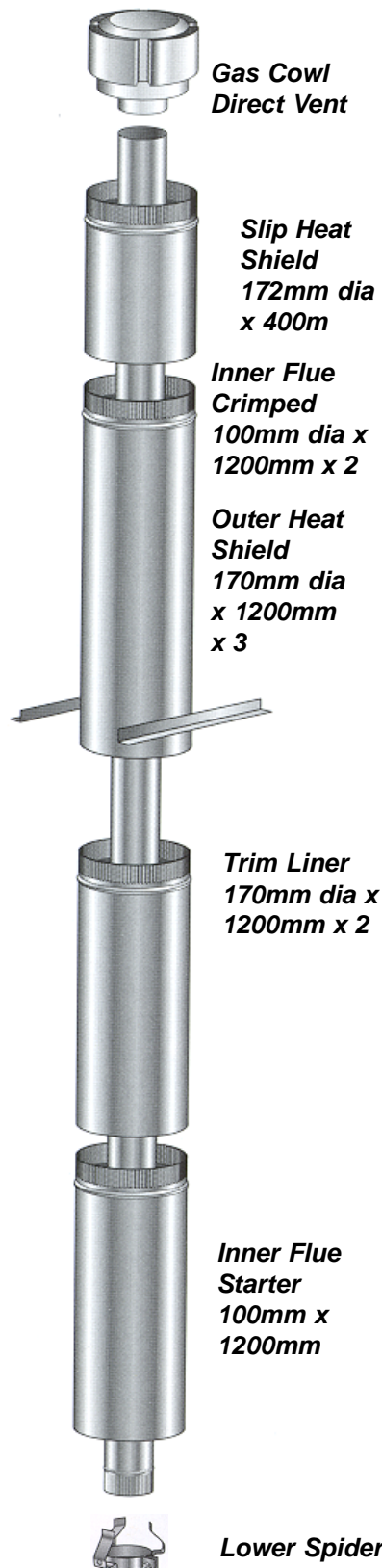
Calais (P36)

This kit contains: Gas Cowl DV, Slip Liner, Outer Liner 1200mm x 3, Inner Flue Crimped 1200mm x 2, Inner Flue Starter 1200mm x 1, Centralising Spider, Liner Supports x 2, Mil-Pac Sealant x 1

Will fit Masport Grenada & Calais Direct Vent Gas Fires

Zero Clearance Top Exit Vertical Flue Kit Installation Instructions

This flue kit has been manufactured in accordance with NZS 5261:1996. To ensure safety this flue kit must be installed as outlined in these instructions. Heater and flue clearances from combustible walls must be in accordance with Masport's specifications and NZS 5261:1996.



1. Locate heater in its proposed position and mark the points for penetration that are directly above the centre of the heater's flue outlet. Check that the heater's location allows the OUTER HEAT SHIELD to clear all structural timbers.
2. Cut a 250mm square hole where penetration is required to accommodate OUTER HEAT SHIELD **NB. A minimum 40mm clearance is required between OUTER HEAT SHIELD and combustible surfaces.**
3. Fit timber nogs around ceiling and roof holes where necessary.
4. Measure overall length of OUTER HEAT SHIELD and FLUE TRIM required. Fix OUTER HEAT SHIELD length(s) to painted FLUE TRIM length, ensuring swaged and crimped end is uppermost, with 3 rivets or self-tapping screws. Insert assembled lengths up through ceiling penetration hole. Fix additional painted FLUE TRIM lengths and continue to raise through roof cavity. Check height the OUTER HEAT SHIELD penetrates roof structure. When calculating roof penetration height, allow for an extra 300mm that can be achieved by using the OUTER HEAT SHIELD SLIP EXTENSION.

The flue is required to be at least 500mm above the nearest point on any part of the roof. It is recommended that in some instances extending the flue above the ridgeline will be necessary. Refer to NZS 5262:2003 for more information. Additional HEAT SHIELDS may have to be added to ensure the correct roof penetration heights are obtained.

5. Assemble the 100mm stainless steel FLUE PIPES together ensuring all seams are in line using 3 pop rivets or screws and seal joints with Mil-Pac sealant (supplied with kit).
6. Fit FLUE SPACER BRACKETS to FLUE if necessary to maintain air gap between FLUE PIPES and OUTER HEAT SHIELD.
7. Lower stainless steel FLUE PIPES from the roof into the OUTER HEAT SHIELD (crimped ends towards heater) and into the heater flue outlet. Lift OUTER HEAT SHIELD for access and seal flue to heater stub.
8. Secure OUTER HEAT SHIELD to heater, if necessary.
9. Using ANGLE BRACKETS secure OUTER HEAT SHIELD to nogs around penetration holes. **NB. A minimum 40mm clearance is required between OUTER HEAT SHIELD and combustible surfaces.**
10. Fix an appropriate flashing around the OUTER HEAT SHIELD to seal onto the roofing or chimney material.
11. Before securing the SLIP EXTENSION OUTER HEAT SHIELD to the OUTER HEAT SHIELD ensure the flue extends above the top of the SLIP EXTENSION OUTER HEAT SHIELD 25mm. Adjust SLIP EXTENSION to obtain this measurement.
12. Fix TOP FLUE SPACER BRACKET to the FLUE making sure lugs fit snugly inside OUTERHEATSHIELD.
13. Fit GAS COWL into flue pushing down fully onto TOP SPACER BRACKET.

Flue Kit Part Number: 588654

N.B. It is the responsibility of the installer to ensure that the installation of this flue kit complies with Masport's specifications for flues and that relevant Local Body requirements are adhered to.

Will fit Masport Grenada & Calais Direct Vent Gas Fires

Direct Vent Inbuilt Horizontal Flue Kit

Product Description

Part Number

DV Horizontal Flue Kit

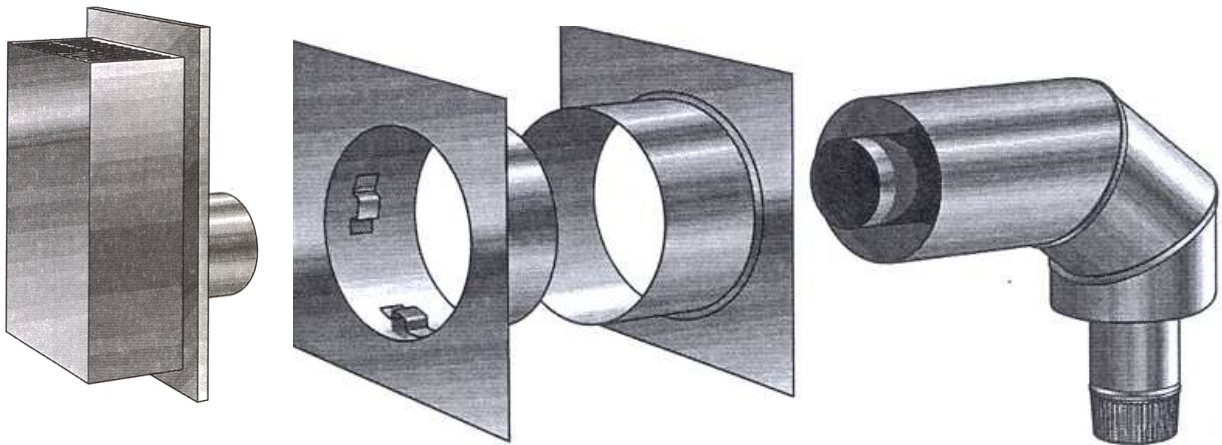
588667



Grenada (P36)



Calais (P36)



This kit contains: Highwind Cowl, Wall Penetration Unit, Outer Liner 300mm, Inner Flue 300mm, 85°, Outer Bend, 85° degree Inner Flue Bend, Mil-Pac Sealant

WARNING:

When installing in a high wind situation, common sense must prevail. Choose a sheltered side of the house.

A non-combustible water ingress shelf will need to be fitted 200mm above the terminal to prevent water ingress in extreme conditions or where no soffit shelters the terminal.

Will fit Masport Grenada & Calais Direct Vent Gas Fires

Zero Clearance Top Exit Horizontal Flue Kit Installation Instructions

This flue kit has been manufactured in accordance with NZS 5261:1996. To ensure safety this flue kit must be installed as outlined in these instructions. Heater and flue clearances from combustible walls must be in accordance with Masport's specifications and NZS 5261:1996.

1. Locate heater in its proposed position and mark a point on the rear wall that is directly behind the centre of the heater's flue outlet and at the required height for wall penetration. To ensure Flue rises sufficiently (10mm per 600mm).
2. Check that the heater location allows the THRU-WALL PENETRATION UNIT to clear all structural wall timbers. To avoid site-trimming, position OUTER HEAT SHIELD BEND on heater stub to calculate height for penetration.
3. Cut a 250mm square hole through wall structure about centre of marked point. Nog if necessary for structural support. **NB: A minimum 40mm clearance is required between OUTER HEAT SHIELD and combustible surfaces.**
4. Measure overall depth of wall. If necessary site trim THRU-WALL PENETRATION UNIT to required length.
5. Fix THRU-WALL PENETRATION UNIT through wall structure, securing the square flange to outer surface of external wall with fasteners. Fix to inner wall similarly.
6. Measure distance from centre of heater stub to outside surface of wall. Make allowance for overlaps required on WALL PENETRATION COWL stubs, and both OUTER HEAT SHIELD BEND and stainless steel FLUE BEND.
7. Fix 100mm stainless steel FLUE length and FLUE BEND to required length using pop rivets or self-tapping screws. Seal joints with an appropriate flue sealant.
8. Fix OUTER HEAT SHIELD and HEAT SHIELD BEND to required length using pop rivets or screws.
9. Seal FLUE to heater stub using Mil-Pac sealant (supplied with kit). Fix FLUE and HEATSHIELD BENDS to heater stub inserting through wall penetration.
10. Apply FLUE sealant (supplied) to flue stub of WALL PENETRATION COWL, and insert COWL through wall ensuring flue stub of COWL fits inside FLUE.
11. Fix WALL PENETRATION COWL to outside wall surface. COWL may be painted with high temperature paint.
12. Silicone all external joints to weatherproof.
13. Fit COWL SAFETY CAGE over cowl if necessary.

N.B. It is the responsibility of the installer to ensure that the installation of this flue kit complies with Masport's specifications for flues and that relevant Local Body requirements are adhered to.

Will fit Grenada & Calais Direct Vent Gas Fires

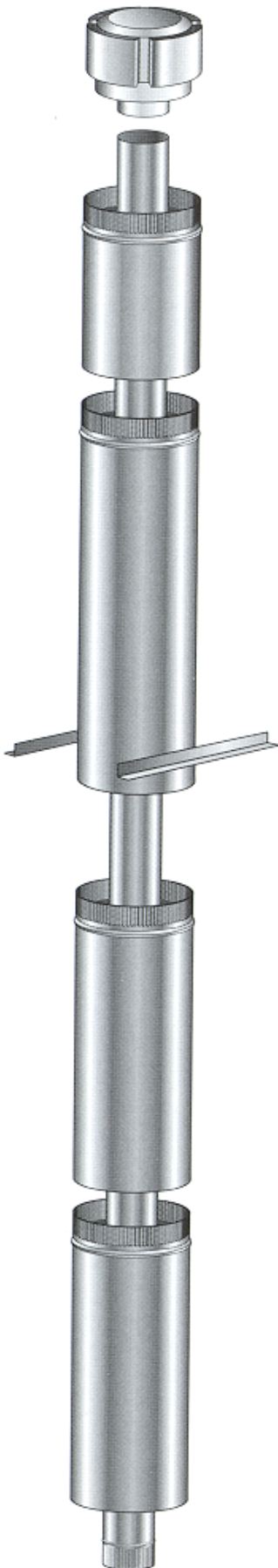
DV Roma Direct Vent Vertical Flue Kit

Product Description

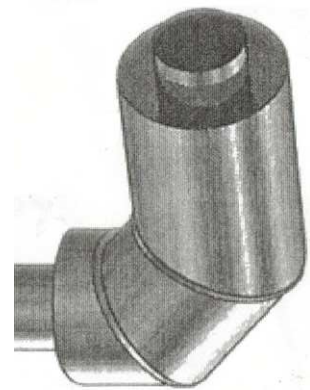
Part Number

DV Vertical Flue Kit

588654



Roma (P33)



DV 85° Bend Kit

Part No: 556313

This kit contains: Gas Cowl DV, Slip Liner, Outer Liner 1200mm x 3, Inner Flue Crimped 1200mm x 2, Inner Flue Starter 1200m x 1, Liner Supports x 2, Mil-Pac Sealant x 1.

NOTE:

Both parts must be ordered to make a complete flue kit

Will fit Masport Roma Direct Vent Gas Fires

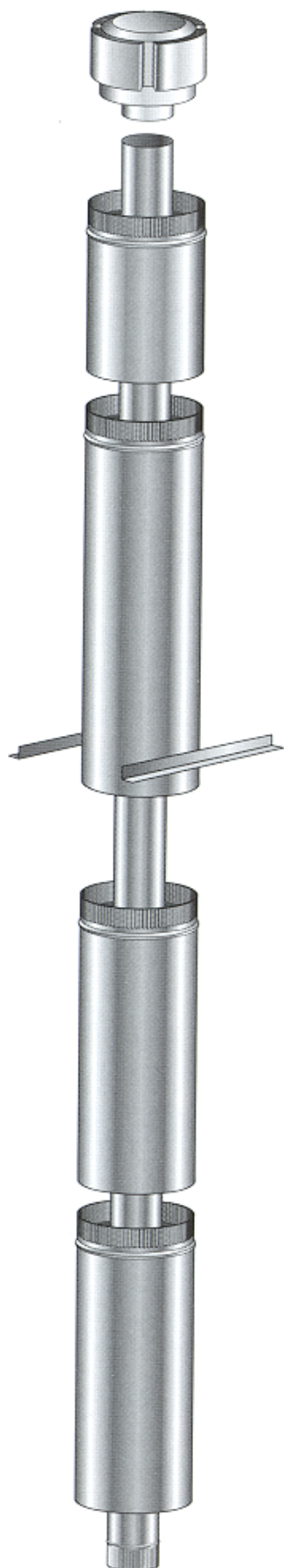
Direct Vent Inbuilt Vertical Flue Kit

Product Description

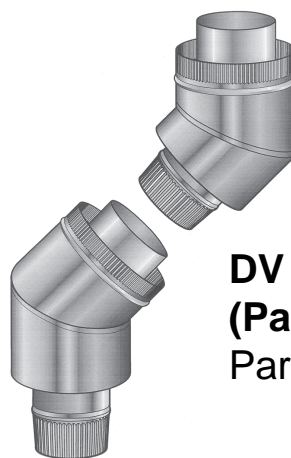
Part Number

DV Vertical Flue Kit

588654



Newport (P121)



**DV Off Set Kit - Room
(Painted)**

Part No: 588658

This kit contains: Gas Cowl DV, Slip Liner, Outer Liner 1200mm x 3, Inner Flue Crimped 1200mm x 2, Inner Flue Starter 1200m x 1, Liner Supports x 2, Mil-Pac Sealant x 1.

NOTE:

Both parts must be ordered to make a complete flue kit

Will fit Masport Newport Direct Vent Gas Fires

DV Inbuilt Horizontal Flex Kit

Product Description

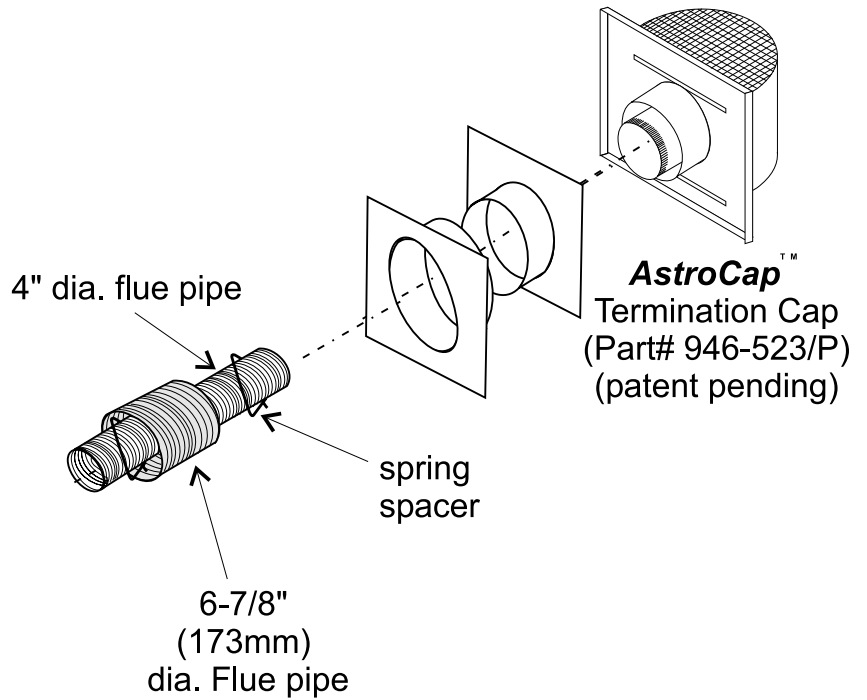
Part Number

**DV Flexi Flue Kit
- 600mm**

946-513



Roma (P33)



Newport (P121)



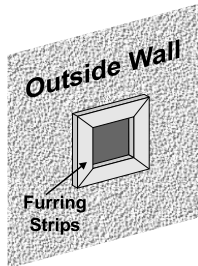
Newport Pier (P131)

***This kit contains: Astrocap (patent pending), Wall
Thimble, 102mm dia. flue pipe, 175mm dia. flue pipe,
Mil-Pac Sealant***

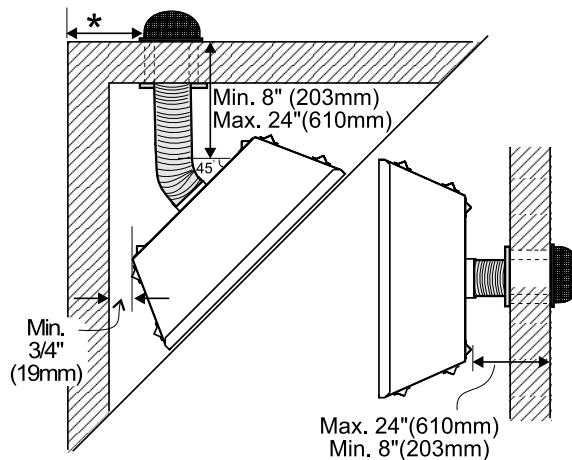
Will fit Masport Roma, Newport & Newport Pier Direct Vent Gas Fires

Masport Flexi Flue Kit Installation Instructions

- 1) Locate the unit in the framing, rough in the gas (preferably on the right side of the unit) and the electrical (Junction block is on the left side) on the left. Locate the centerline of the termination and mark wall accordingly. Cut a 254mm hole in the wall (inside dimension).



*If this is an outside corner, the minimum distance between the flue and the outside corner is 150mm with **AstroCap** termination cap or 300mm with alternate termination cap (556310).



Minimum and Maximum Flue Clearances

Note: To make the installation more aesthetically pleasing, we recommend framing out a square to mount the terminal to.

Note: A 40mm clearance around the liner must be maintained except that only a 25mm clearance is needed at the termination end. We recommend framing a 254mm x 254mm (inside dimensions) hole to give structural rigidity for mounting the termination.

- 2) Level the fireplace and fasten it to the framing using nails or screws through the nailing strips.
- 3) Assemble the flue assembly by applying Mill Pac to the 100mm inner collar of the termination and slipping the 100mm liner over it at least 35mm. Fasten with the 3 screws (drilling pilot holes will make this easier). Apply Mill Pac or high temperature silicone to the 175mm flex pipe and slip it over the 175mm outer collar of the flue terminal at least 35mm and fasten with the 3 screws.
- 4) Separate the 2 halves of the wall thimble and securely fasten the one with the tabs to the outside wall making sure that the tabs are on top and bottom. Fasten the other thimble half to the inside wall. The thimble halves slip inside each

other and can be adjusted for 2 x 4 or 2 x 6 walls. **The liners must slip over the collars a minimum of 35mm.**

- 5) Slip the assembled liner and termination assembly through the thimble making sure the termination cap faces up (there are markings on the cap that show which way is up). This will position the termination cap with proper down slope for draining water. Fasten the cap to the outer wall with the 4 supplied screws.
- 6) Pull the centre 100mm liner and outer 175mm liner out enough to slip over the flue collars of the fireplace.
- 7) Apply Mill Pac over the fireplace inner collar and slip the 100mm liner down over it and attach with 3 supplied screws.

- 8) Do the same with the 175mm liner.
- 9) Apply a bead of silicone between the thimble and termination and around the outer edge of the terminal at the wall in order to keep the water out.

IMPORTANT:
Do not locate Cowl where excessive wind may occur.

